



CREATING
VALUE

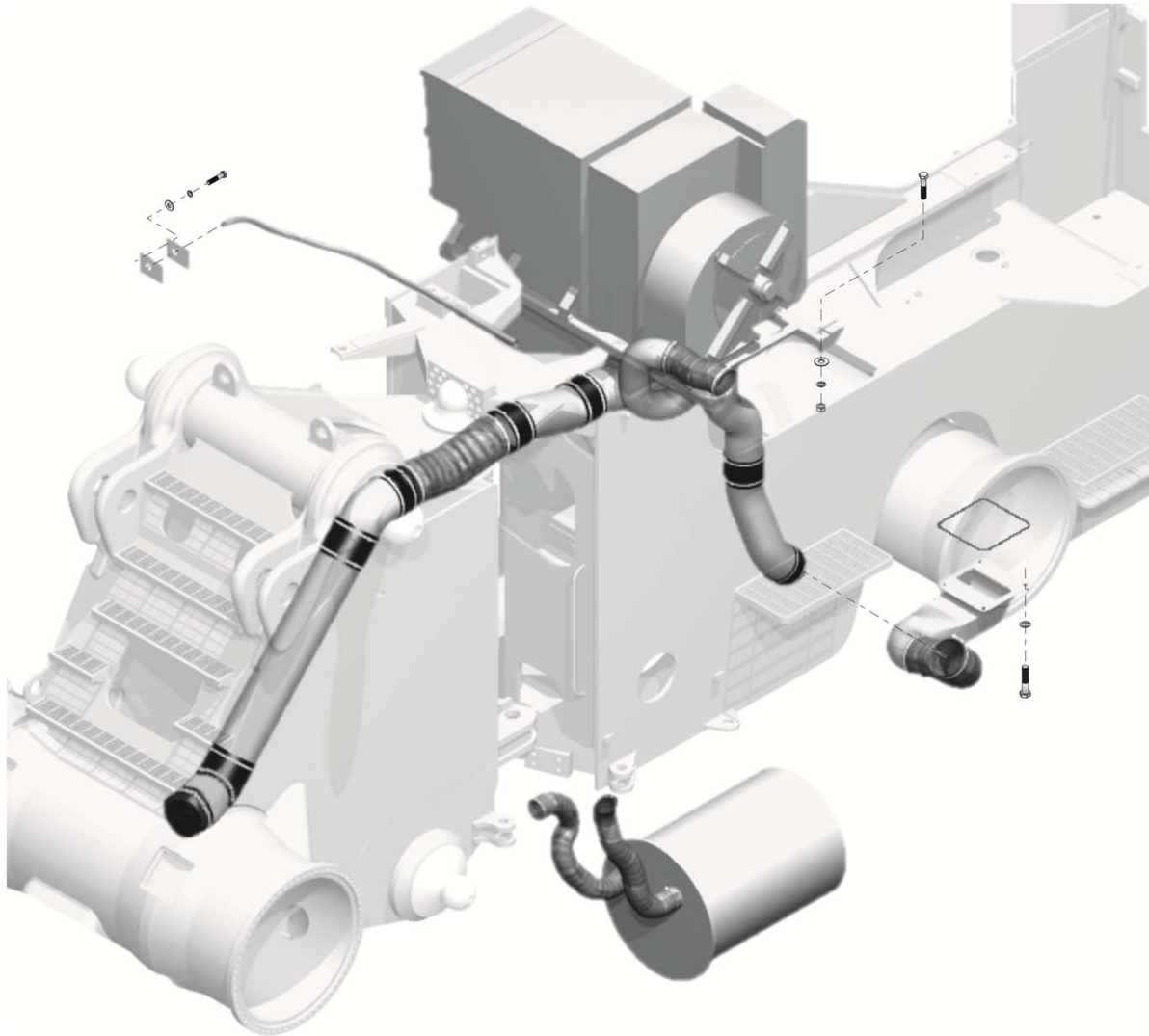
COOLING AIR SYSTEM

JOYGLOBAL

COOLING AIR SYSTEM

- Theory of Operation
- Component Descriptions
- Circuit Descriptions
- Settings and Adjustments
- Troubleshooting
- Removal and Installation

THEORY OF OPERATION

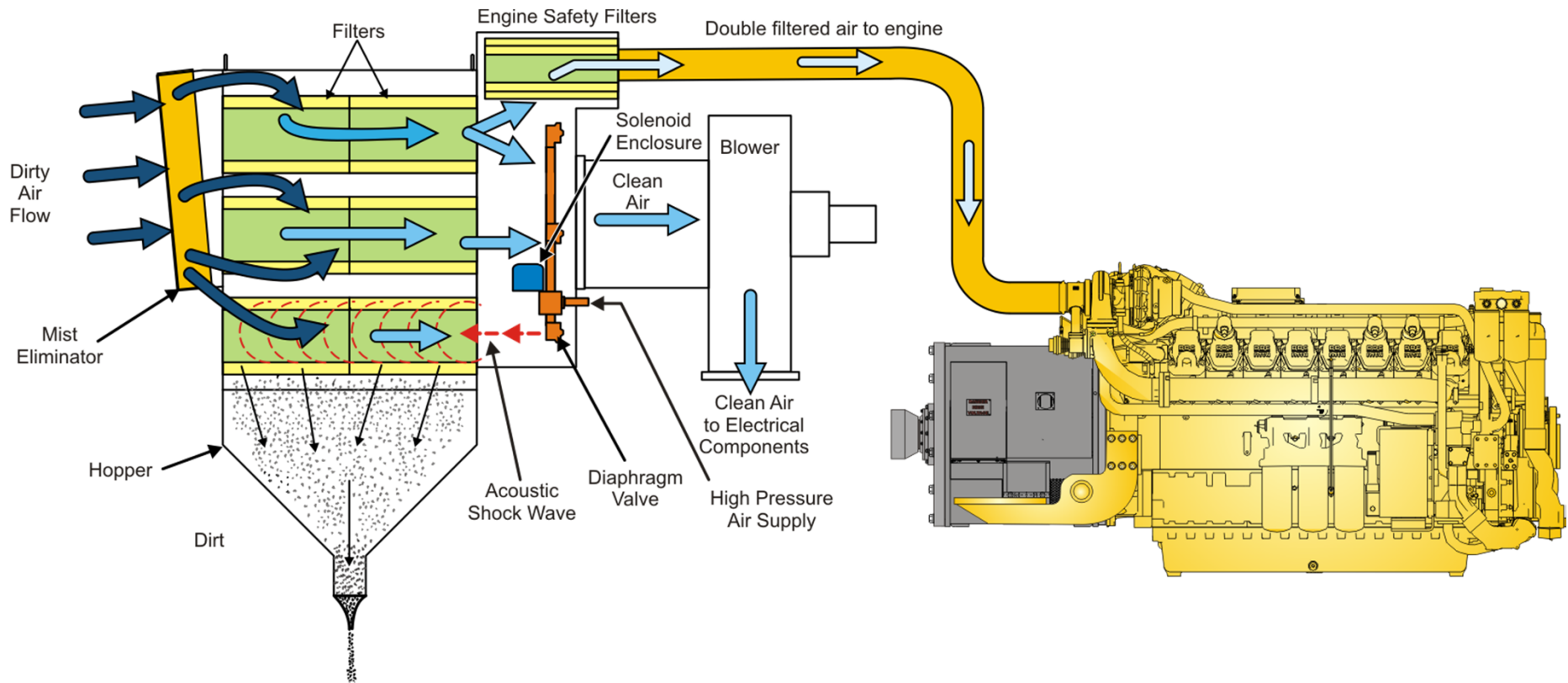


COMPONENT DESCRIPTION

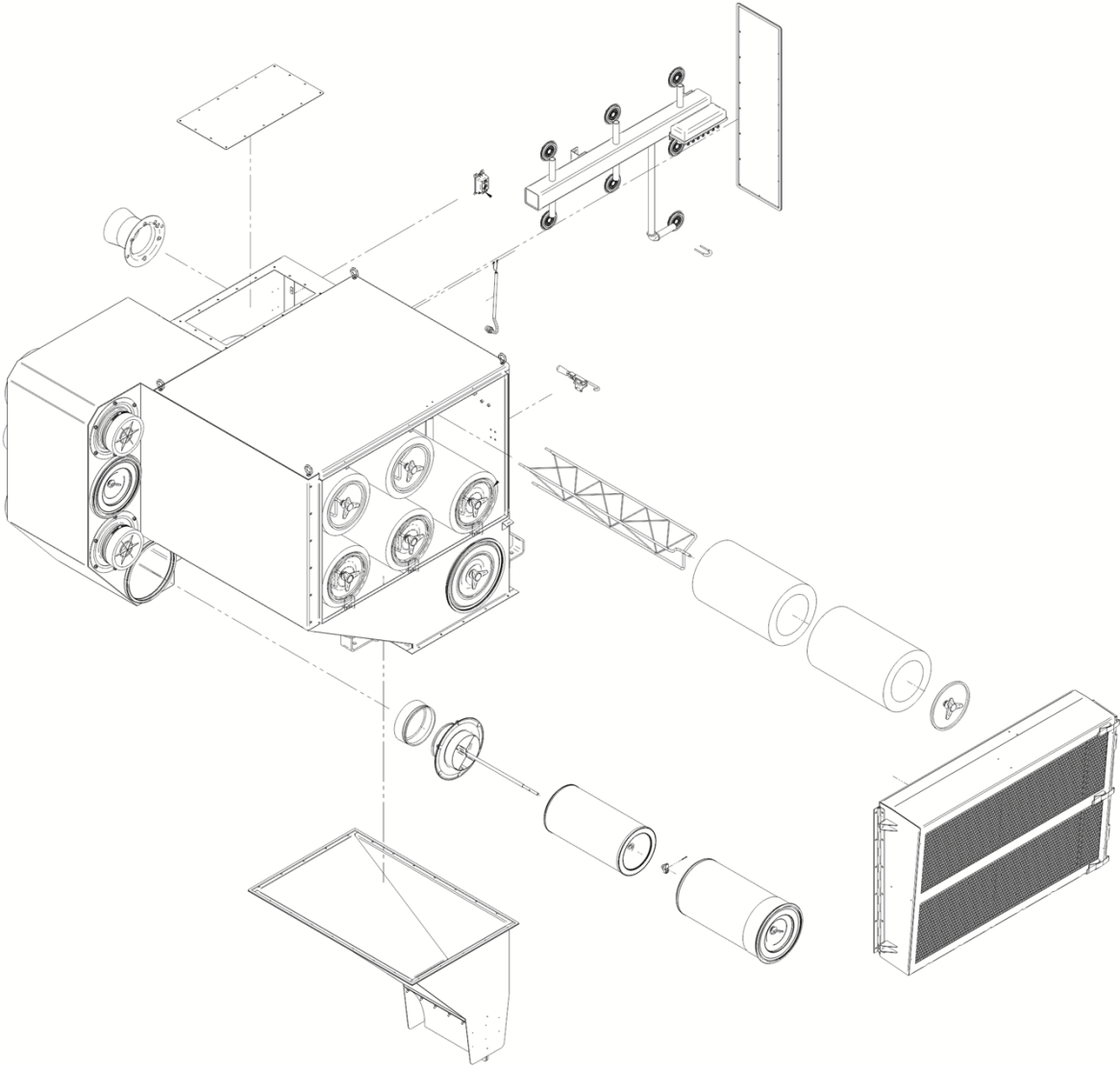
COMPONENT DESCRIPTIONS

- Klenz air cleaner
- Mist eliminators
- Filters
- Blower housing
- Blower motor
- Blower ducting

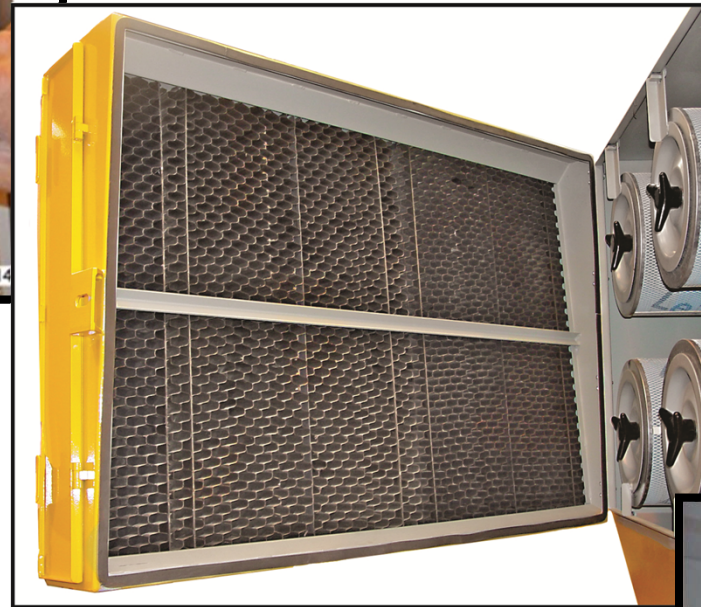
AIRFLOW TO ENGINE



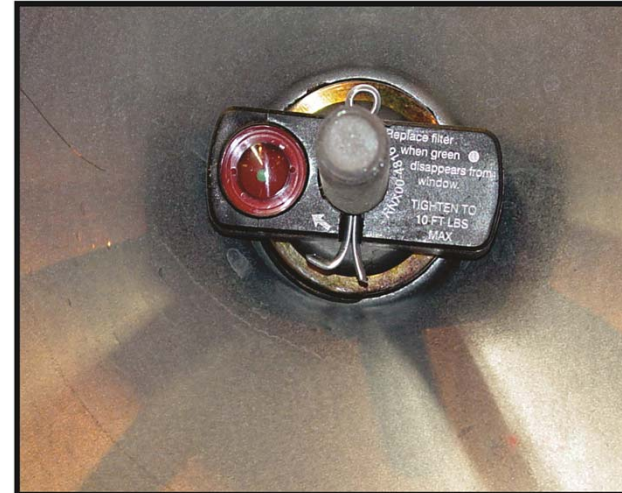
KLENZ [EXPLODED VIEW]



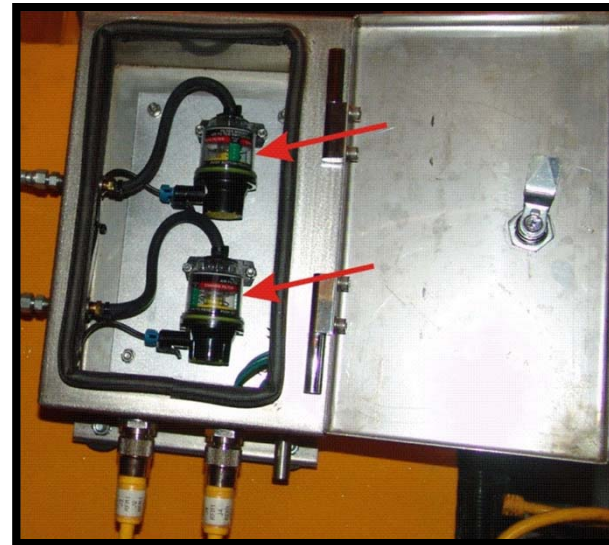
MIST ELIMINATORS AND DUST CAPS



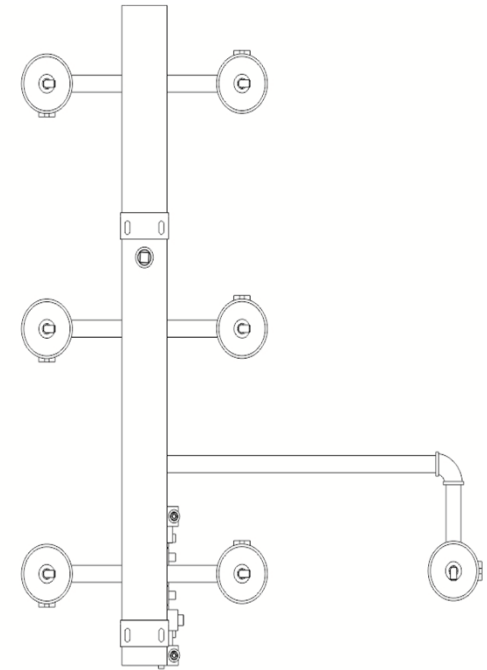
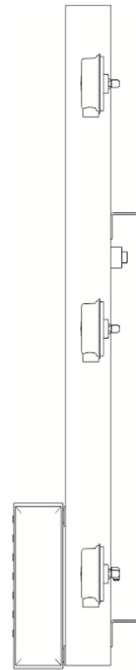
KLENZ SAFETY FILTERS



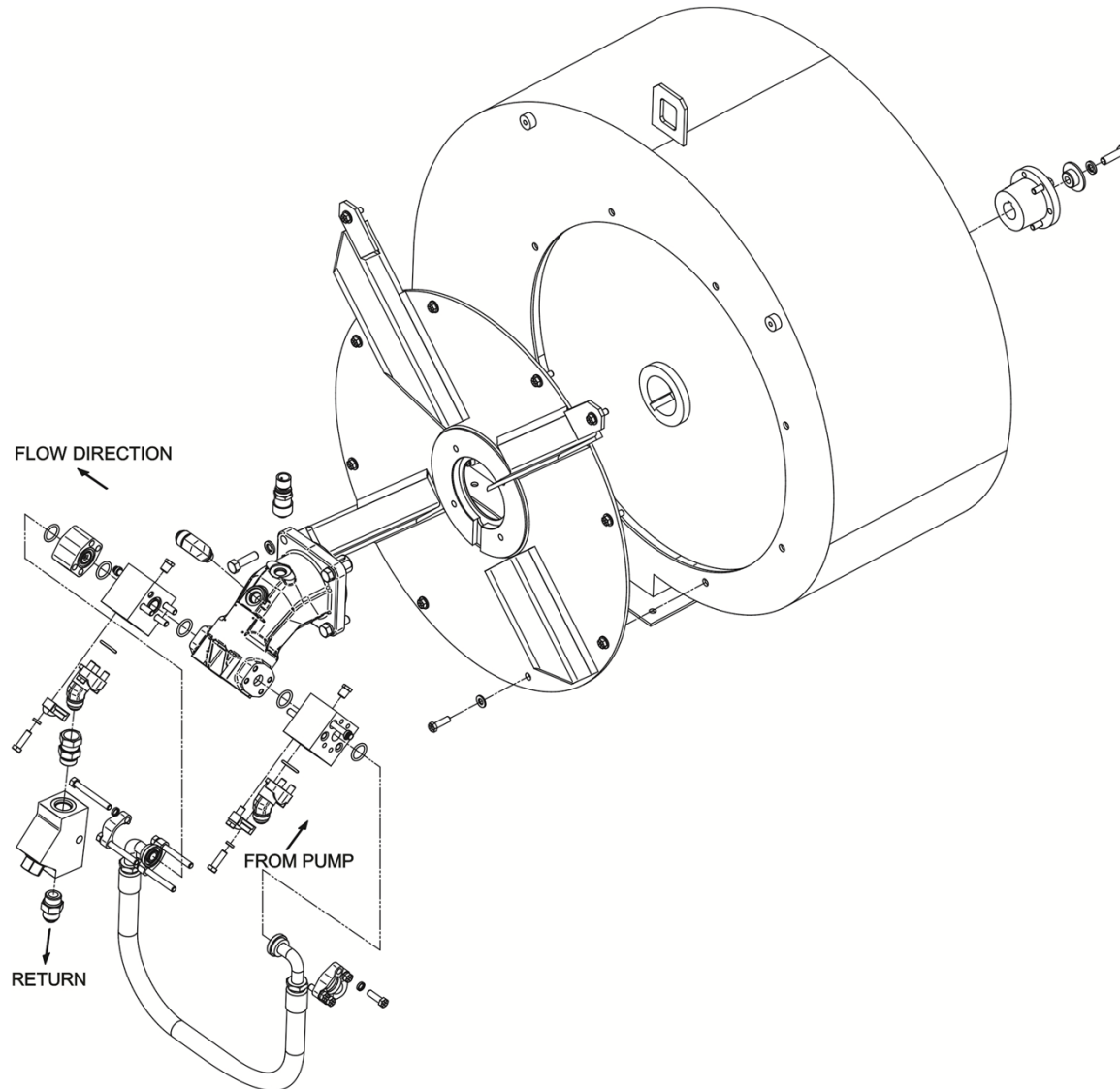
AIR RESTRICTION INDICATION



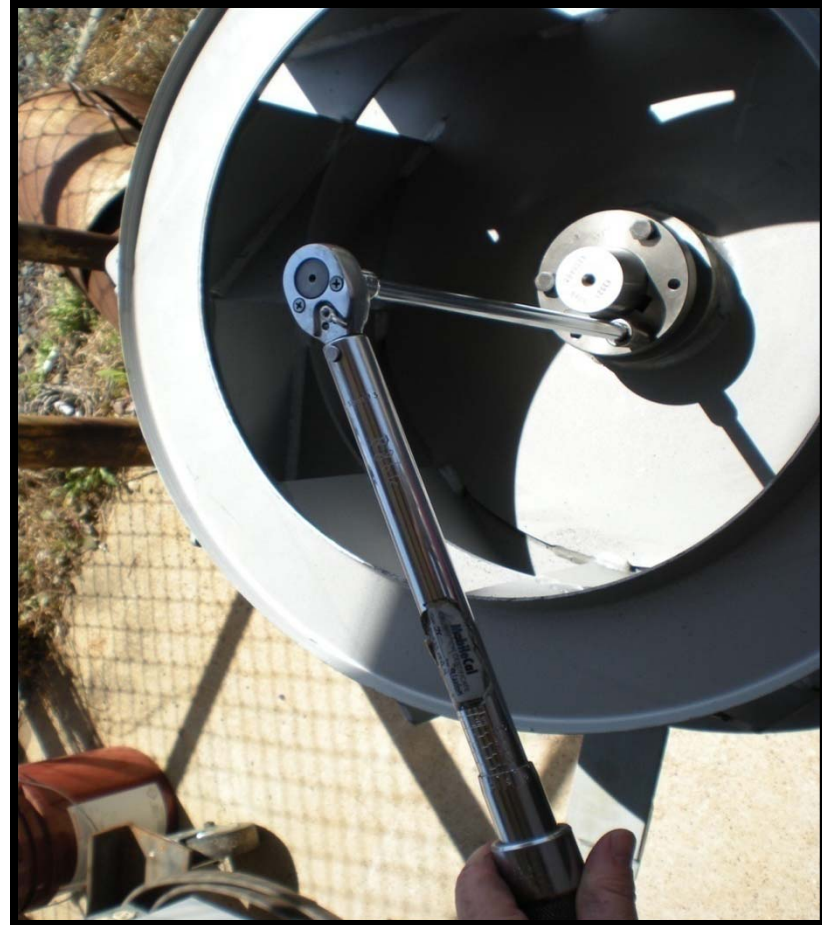
PULSE VALVES



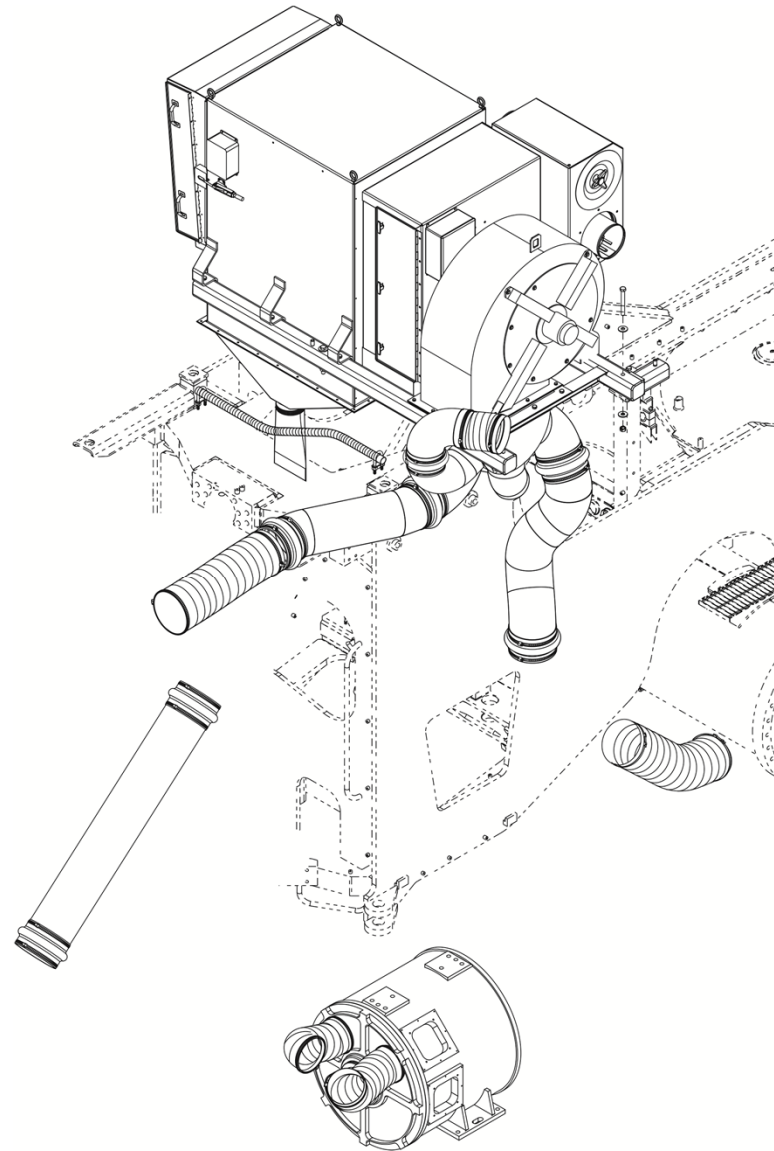
BLOWER HOUSING



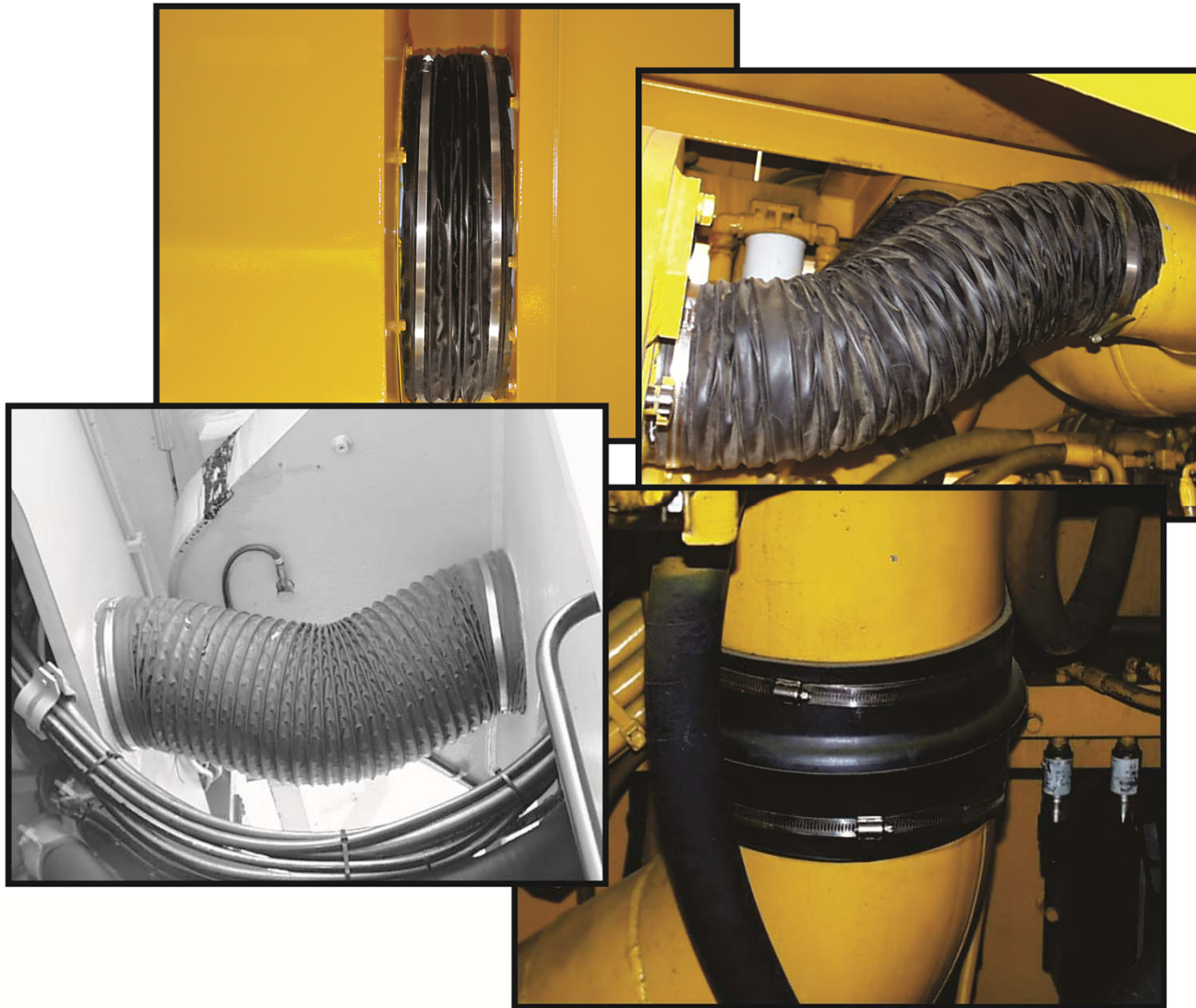
BLOWER WHEEL



BLOWER SYSTEM AIR DUCTING LAYOUT

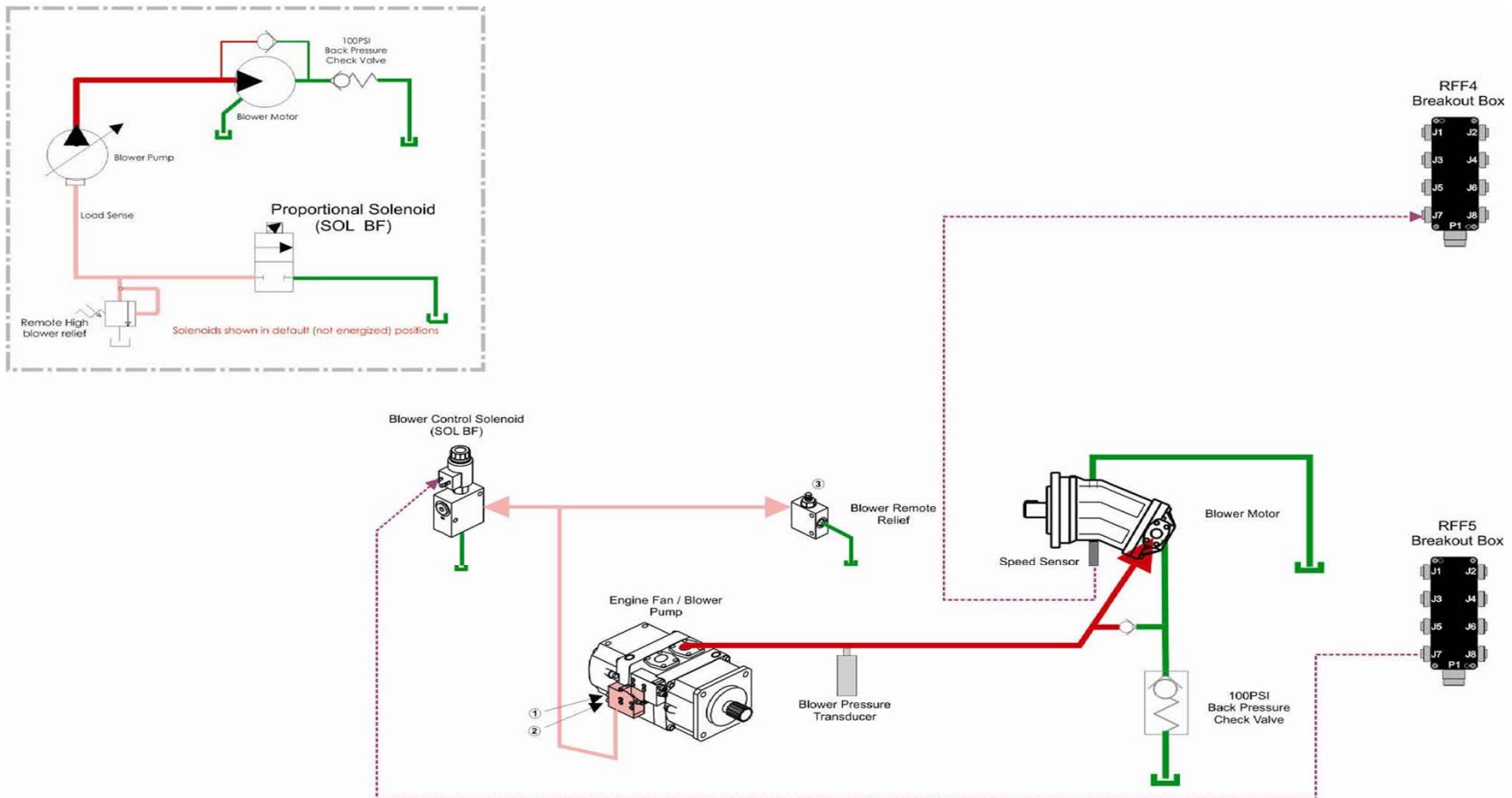


BLOWER SYSTEM AIR DUCTING



CIRCUIT DESCRIPTIONS

BLOWER MOTOR PUMP PRESSURE

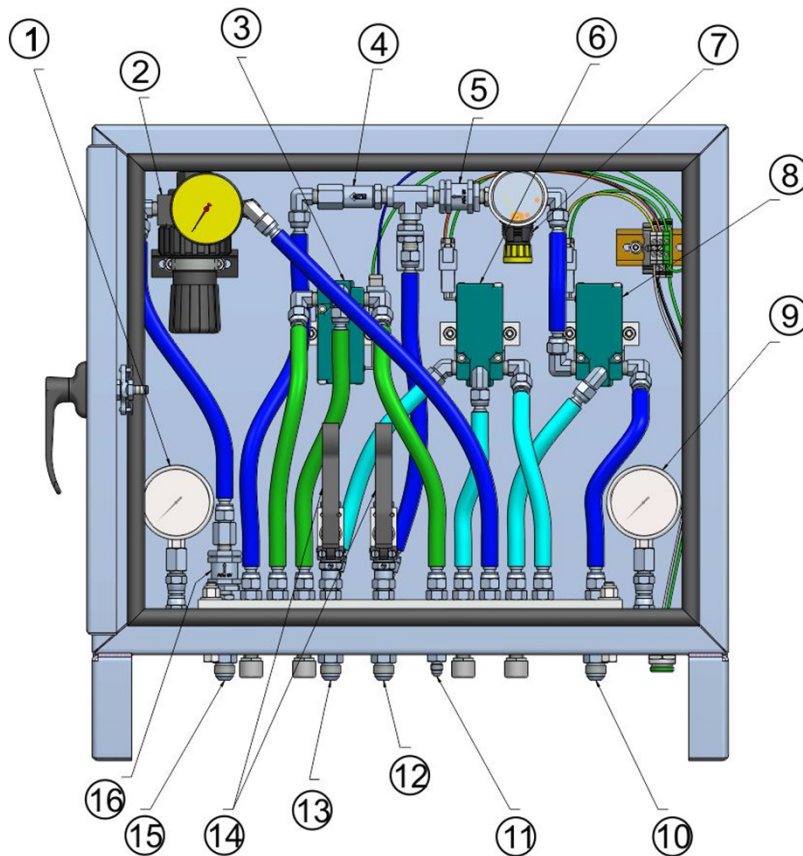


SETTINGS AND ADJUSTMENTS

50 Series Setting and Adjustment Specifications

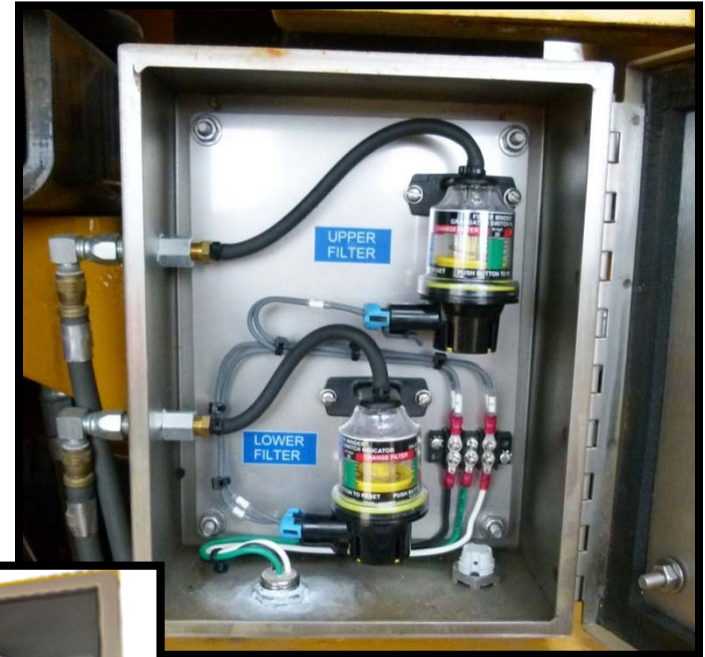
KLENZ REGULATOR

- ❑ Check inlet
- ❑ Set at 90 psi in LINCS II

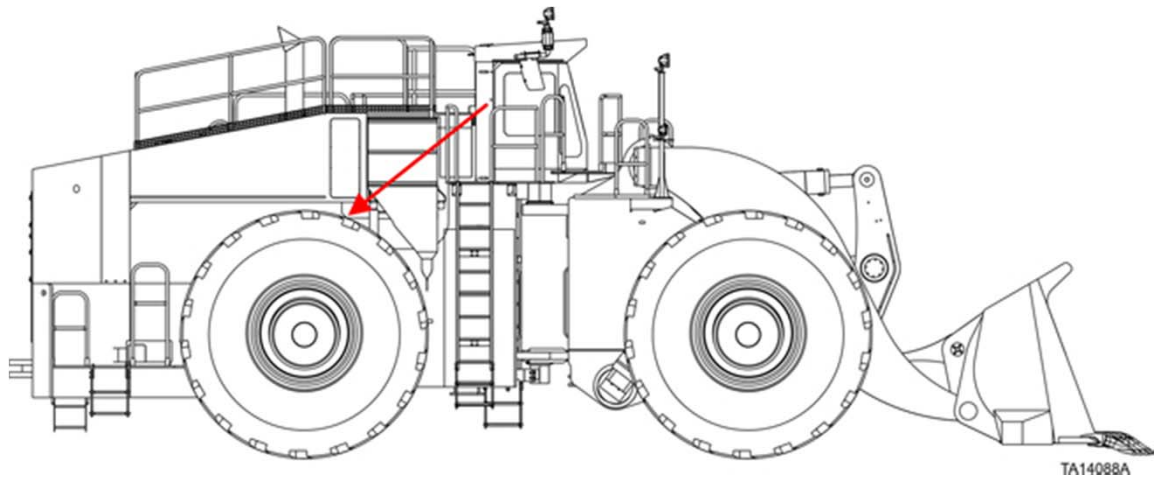
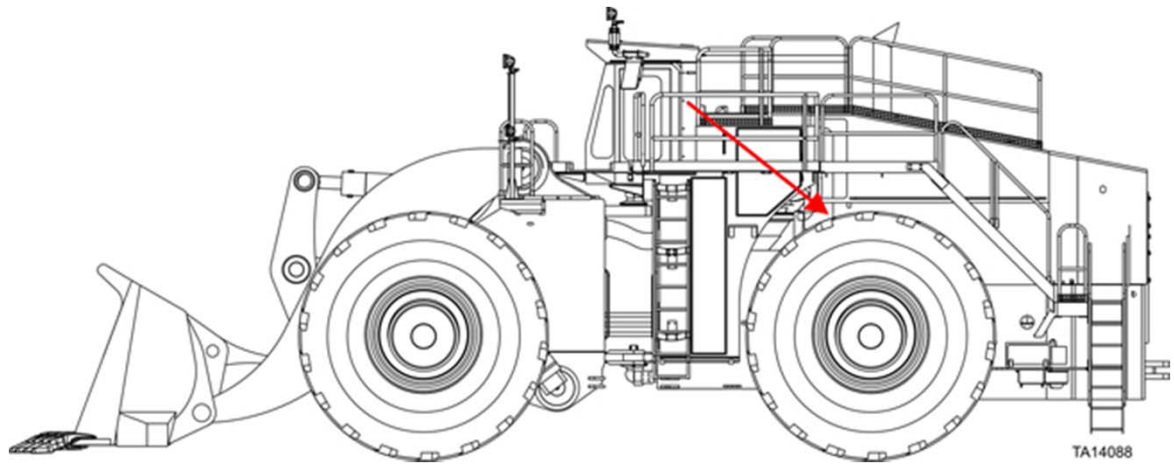


- 1) Distribution Reservoir Pressure
- 2) Klenz Supply Regulator
- 3) SOL TD
- 4) 12 PSI Relief Valve
- 5) Check Valve
- 6) SOL KA
- 7) Hyd Supply Regulator
- 8) SOL HA
- 9) Klenz Reservoir Pressure
- 10) To/From Klenz Reservoir
- 11) To SOL TD
- 12) To Hyd Reservoir
- 13) To Klenz Manifold
- 14) Manual Shut Off
- 15) From Distribution Reservoir
- 16) Check Valve

500 HOUR INSPECTION



SAFETY ELEMENT RESTRICTION INDICATORS



KLENZ CHECK OUT SHEET

50 SERIES MACHINES										AIR SYSTEM				
KLENZ™ AND AIR INTAKE SYSTEM 500-HOUR INSPECTION AND SERVICE RECORD SHEET														
Date	Time			Model			Serial No.			Hours				
BEFORE & AFTER Filter Change	ENGINE RUNNING CHECKS - BEFORE & AFTER ANY FILTER CHANGES (IF NOT CHANGING FILTER, RECORD BEFORE ONLY)													
	KLENZ™ RESTRICTION (IN H ₂ O)				BLOWER RPM				INLET RESTRICTION INDICATORS (IN H ₂ O) - HIGH IDLE					
	Low Idle	High Idle	Low Idle	High Idle	#1 Top	#2 Mid Upper	#3 Mid Lower	#4 Bottom						
BEFORE														
AFTER														
KLENZ™ PULSE VALVES AND SOLENOIDS							PULSE TIMING							
KLENZ™ PULSE VALVE OPERATIONAL CHECKS - DO PULSE VALVES FUNCTION CORRECTLY? (YES / NO)										LINC'S® TIME IN SECONDS				
Top Front	Top Middle	Top Rear	Center Front	Center Middle	Center Rear	Lower	Low Idle	High Idle						
PRIMARY FILTER INSPECTION & CHANGES														
KLENZ™ PRIMARY FILTER CONDITION - WAS FILTER CHANGED (OK / CHANGED)										The KLENZ™ Pulse Valves should emit a clearly audible "BOOM" whenever the LINC'S® energizes the Solenoids.				
Top Front	Top Middle	Top Rear	Center Front	Center Middle	Center Rear	Lower								
SAFETY FILTER INSPECTION & CHANGES														
DO NOT REMOVE ANY SAFETY FILTER COVER UNLESS LINC'S ALARM IS ACTIVATED.										#1 Top	#2 Mid Upper	#3 Mid Lower	#4 Bottom	
Filter Indicator Flag in Filter Retainer Nut Color (Red / Green)														
Safety Filter Nut Cotter Pins Installed (Yes / No)														
Safety Filter Changes														
Check Air Induction System Ducting and Mounts				Left Front	Left Rear	Right Front	Right Rear							
KLENZ™ End - Hose and Clamp Check (OK / Damaged / Repaired)														
Turbo End - Hose and Clamp Check (OK / Damaged / Repaired)														
Air Inlet Ducting and Supports Check (OK / Damaged / Repaired)														
PARTS REQUIRED, ACTION REQUIRED, REPAIRS COMPLETED														
COMMENTS														
INSPECTOR'S NAME (Print)							INSPECTOR'S SIGNATURE							

TROUBLESHOOTING